

CAIZER T46 PLUS



※Symmetric



※Asymmetric

High Quality, Advanced Technology

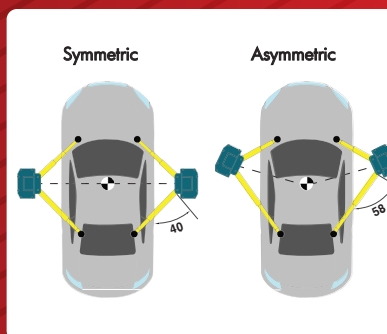
4600kg SWL Clear floor.

- Twin RAM type fully sealed hydraulic cylinders
- High quality rotation resistant wire rope balance cables
- Electric safety lock release with timer
- 90mm Low profile telescopic lift pads
- Adjustable cross member height
- Optional: Arm tool trays, lift pad extensions, remote control
- Dual upper limit sensor on post and cross member
- Top quality Korean Powerpack

※OPTION : Remote Control, Arm Toll Tray, CCSS(Corporate Colour Scheme Skin)



Asymmetric Post Installation Advantages



More Front Space



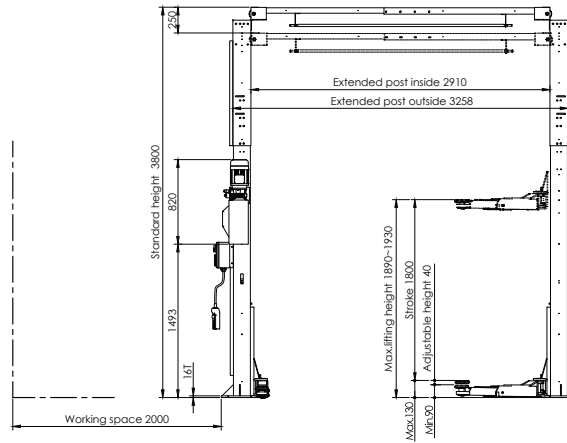
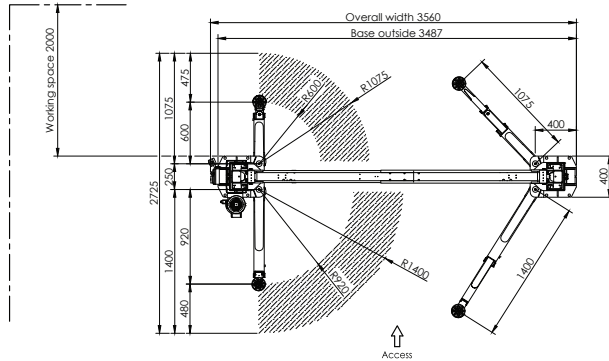
Wide Door Open



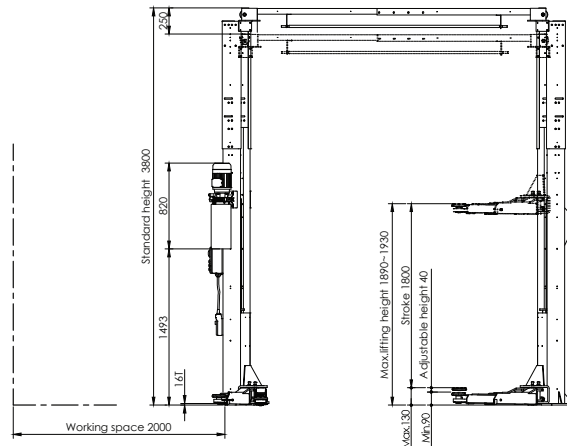
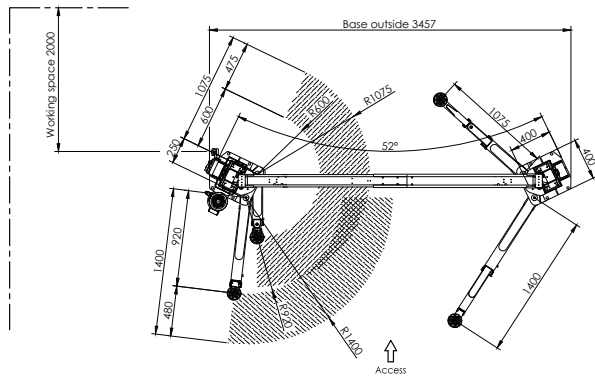


DRAWING: T46 PLUS (A) (B)

Install option 1: Symmetric Post (asymmetric arms)



Install option 2: Asymmetric Post



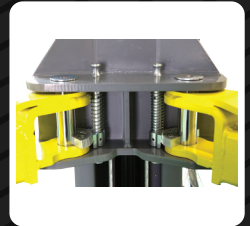
FEATURE



4HP Italian Power Pack



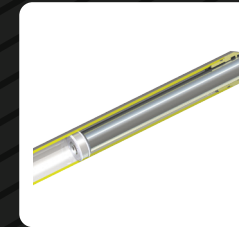
Smart Control Box



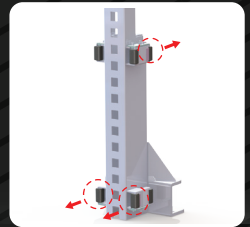
Visible Arm Lock



Safety Speed Control Valve



Ram Type Cylinder



Carriage Guide Adjustment

T46 PLUS Drawing (A) (B)

Lifting Capacity	4,600 Kg
Max. Lifting Height	1,890 ~ 1,920 mm
Min. Height	90 mm
Stroke	1,800 mm
Lifting Time	Std Powerpack Approx 60 sec. Upgrade powerpack 40 sec
Lowering	Approx. 30 ~ 40 sec.
Motor	4HP, 240/415v, 50Hz
Operating Method	Control box (Optional cable remote control)
Net Weight	Approx 800 Kg



sales@caizer.com.au



(02) 4255 7888



CAIZER.COM.AU